

APPENDIX A

MAPS

**#2024-22
TUNNEL MANHOLE REHABILITATION F/Y 24-1
VICINITY MAP**

**Add Alt #1
Structure #3827
Dublin & Ohio**

**Base Bid
Structure #3811
2nd & Dublin**

**Base Bid
Structure #3330
12th & Independence**

**Base Bid
Structure #789
6th & Center**

**Base Bid
Structure #1234
Parrish & Hathaway**

4th St

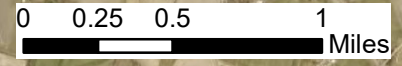
2nd St

9th St

Frederica St

New Hartford Rd

Wendell Ford Expy

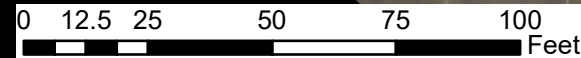


See Section 0044 of project specifications for items regarding traffic control, access, bypassing, etc.

Dublin Lane is a part of City of Owensboro Fall Paving List. Contractor shall complete all work for RWRA project and have Dublin Lane reopened prior to July 31, 2025. Contractor shall coordinate with City of Owensboro Engineering if delays expected.

Base Bid
Rehabilitate Structure #3811
2nd & Dublin

Business access to remain open from 2nd St. Contractor to notify business before closing road.



See Section 0044 of project specifications for items regarding traffic control, access, bypassing, etc.

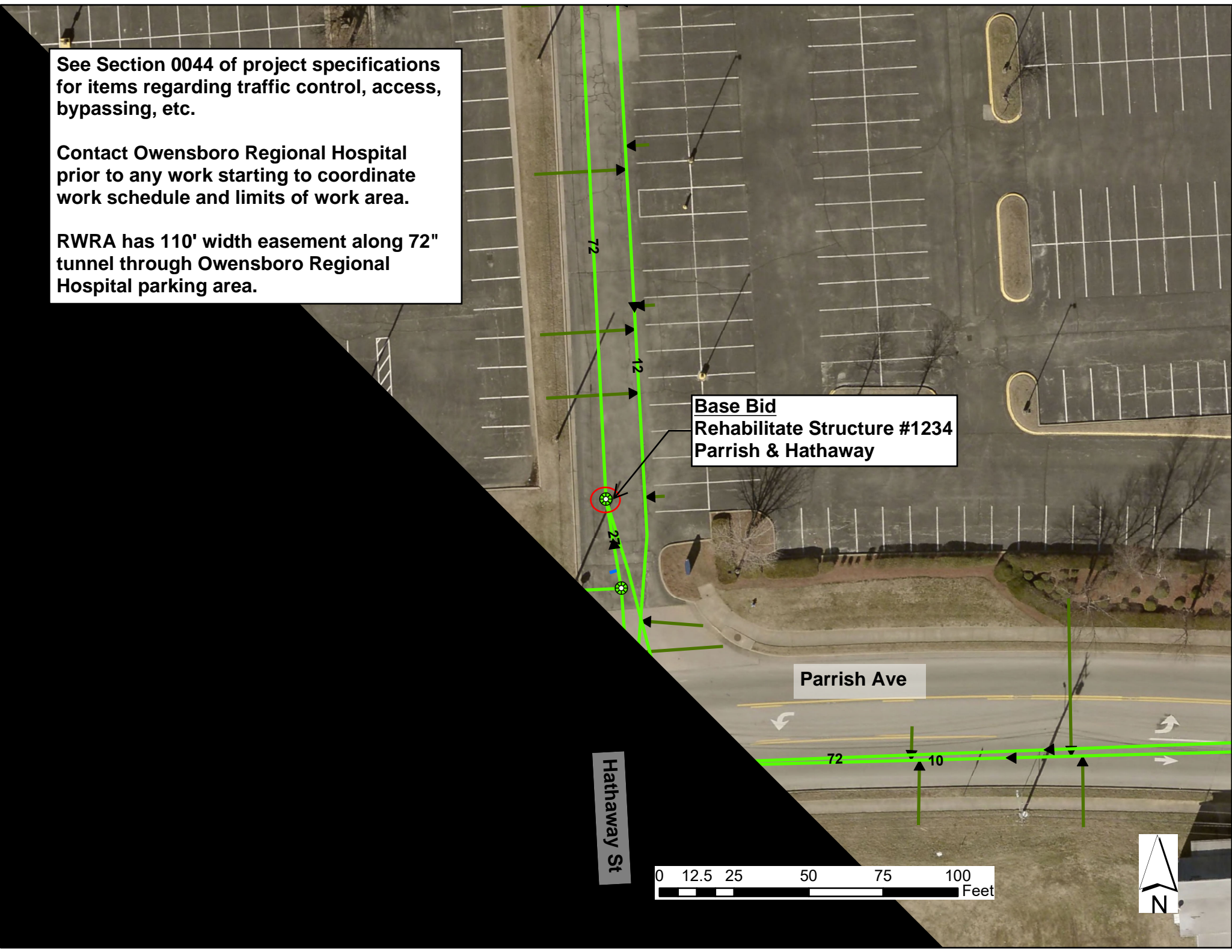
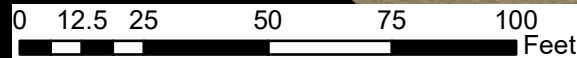
Contact Owensboro Regional Hospital prior to any work starting to coordinate work schedule and limits of work area.

RWRA has 110' width easement along 72" tunnel through Owensboro Regional Hospital parking area.

Base Bid
Rehabilitate Structure #1234
Parrish & Hathaway

Parrish Ave

Hathaway St



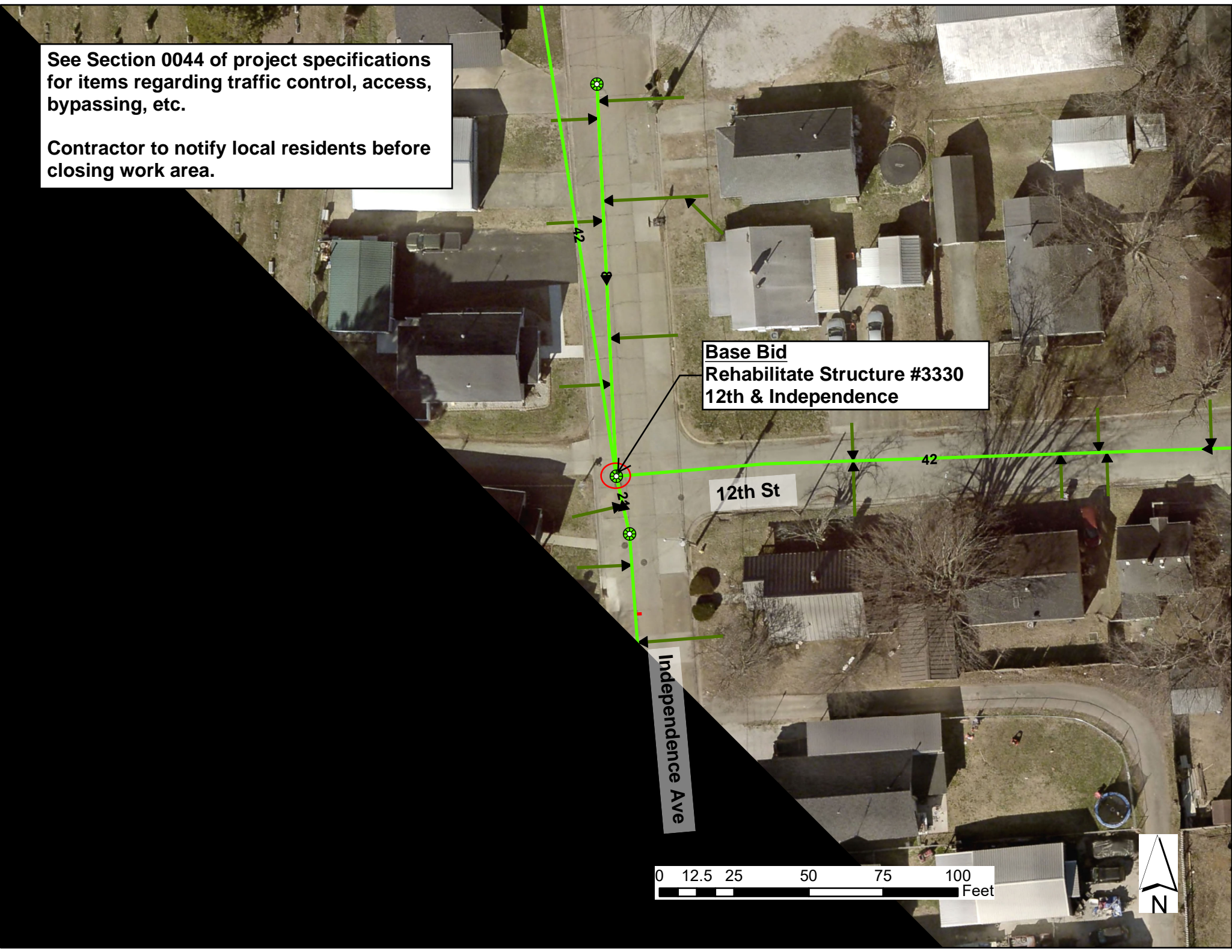
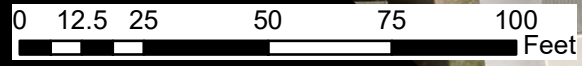
See Section 0044 of project specifications for items regarding traffic control, access, bypassing, etc.

Contractor to notify local residents before closing work area.

Base Bid
Rehabilitate Structure #3330
12th & Independence

12th St

Independence Ave



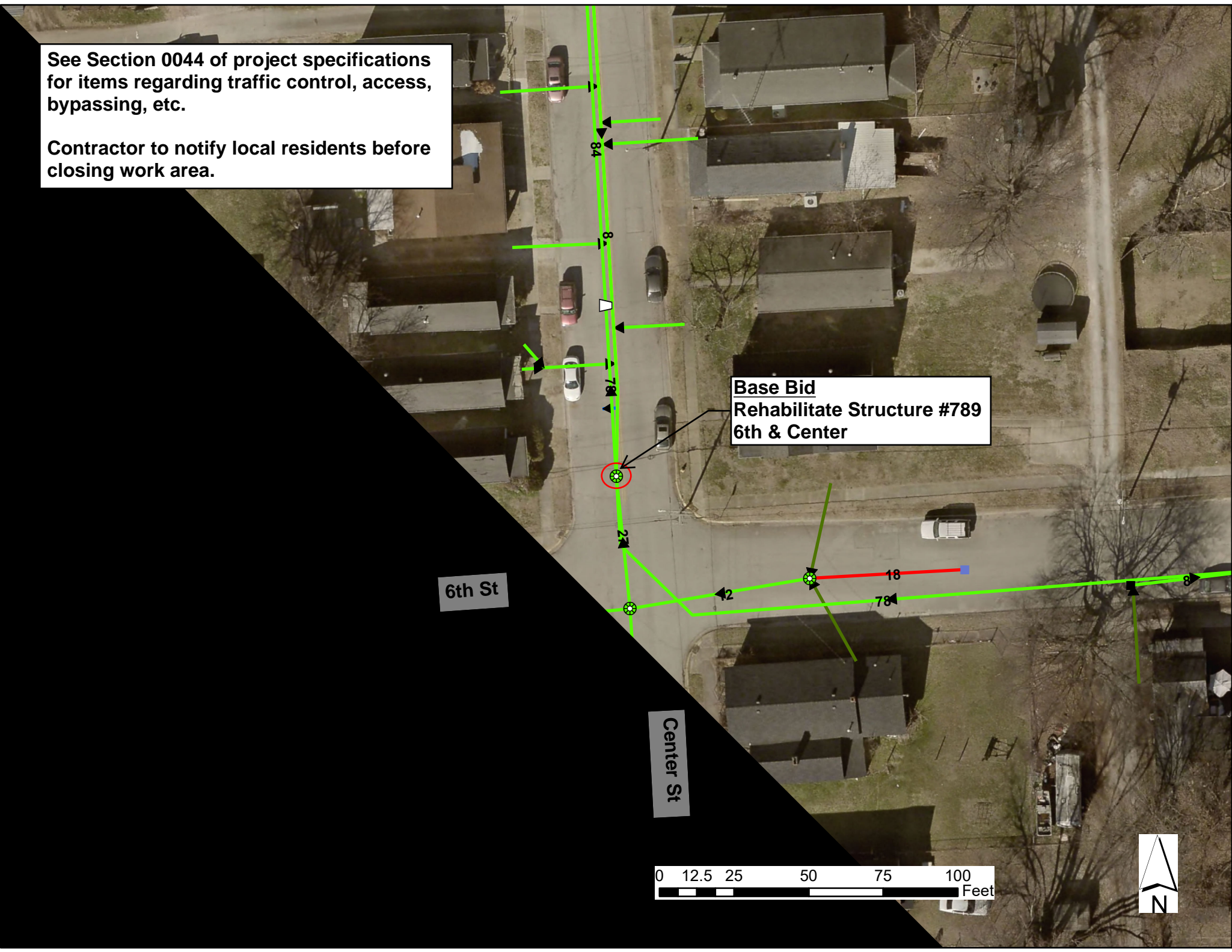
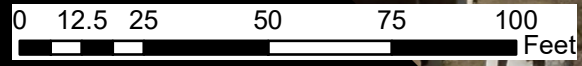
See Section 0044 of project specifications for items regarding traffic control, access, bypassing, etc.

Contractor to notify local residents before closing work area.

Base Bid
Rehabilitate Structure #789
6th & Center

6th St

Center St



See Section 0044 of project specifications for items regarding traffic control, access, bypassing, etc.

Contact Specialty Food Groups, LLC prior to any work starting to coordinate work schedule and access to their facility.

Dublin Lane is a part of City of Owensboro Fall Paving List. Contractor shall complete all work for RWRA project and have Dublin Lane reopened prior to July 31, 2025. Contractor shall coordinate with City of Owensboro Engineering if delays expected.

Ohio St

Dublin Ln

Add Alt #1
Rehabilitate Structure #3827
Ohio & Dublin

